

2026 Iowa State Tax Information

Iowa Department of Revenue: <https://tax.iowa.gov/withholding-tax-information>

To verify the 2026 tax information, either key in the Tax ID or search for the ID in the Taxes option. On the Tax Table tab, enter 2026 in the Tax Year. Below is a screen image of the 2026 tax information. Refer to Help Topic – Changing a Tax for detailed instructions to manually change a tax if needed.

Head of Household Tax Table screen:

PR Taxes

File Options Reports Pin To Help

Tax ID SITIA Iowa SIT

General Tax Table Taxes Payable

Tax Year 2026

Tax Table Head of Household

Tax Rate 3.80

Supplemental Rate 3.80

Deduction 19,500.00

2 or More Standard Deductions

Each Subsequent Personal Allowance

Allowance 40.00

2nd Personal Allowance

Tax Table

	Wages Over Δ	But Not Over Δ	Amount to Withhold Δ	Plus % of Excess
* X				

Document Management: 2026

Married Filing Jointly with Spouse Having No Earned Income, or Qualified Surviving Spouse Tax Table screen:

PR Taxes

File Options Reports Pin To Help

Tax ID SITIA Iowa SIT

General Tax Table Taxes Payable

Tax Year 2026

Tax Table Married Filing Jointly with Spouse Having No Earned Income, or Qualified Surviving Spouse

Tax Rate 3.80

Supplemental Rate 3.80

Deduction 26,000.00

2 or More Standard Deductions

Each Subsequent Personal Allowance

Allowance 40.00

2nd Personal Allowance

Tax Table

	Wages Over Δ	But Not Over Δ	Amount to Withhold Δ	Plus % of Excess
* X				

Document Management: 2026

Other, or Married Filing Jointly with Spouse Having Earned Income Tax Table screen:

PR Taxes

File Options Reports Pin To Help

Tax ID SITIA lowa SIT

General Tax Table Taxes Payable

Tax Year 2026

Tax Table
Other, or Married Filing Jointly with Spouse Having Earned Income

Tax Rate 3.80

Supplemental Rate 3.80

Deduction 13,000.00

2 or More Standard Deductions

Each Subsequent Personal Allowance

Allowance 40.00

2nd Personal Allowance

Tax Table

	Wages Over Δ	But Not Over Δ	Amount to Withhold Δ	Plus % of Excess
*	X			

Document Management 2026

Married (2023 & Prior W4) Tax Table screen:

PR Taxes

File Options Reports Pin To Help

Tax ID SITIA lowa SIT

General Tax Table Taxes Payable

Tax Year 2026

Tax Table
Married (2023 & Prior W4)

Tax Rate 3.80

Supplemental Rate 3.80

Deduction 26,000.00

2 or More Standard Deductions

Each Subsequent Personal Allowance

Allowance 40.00

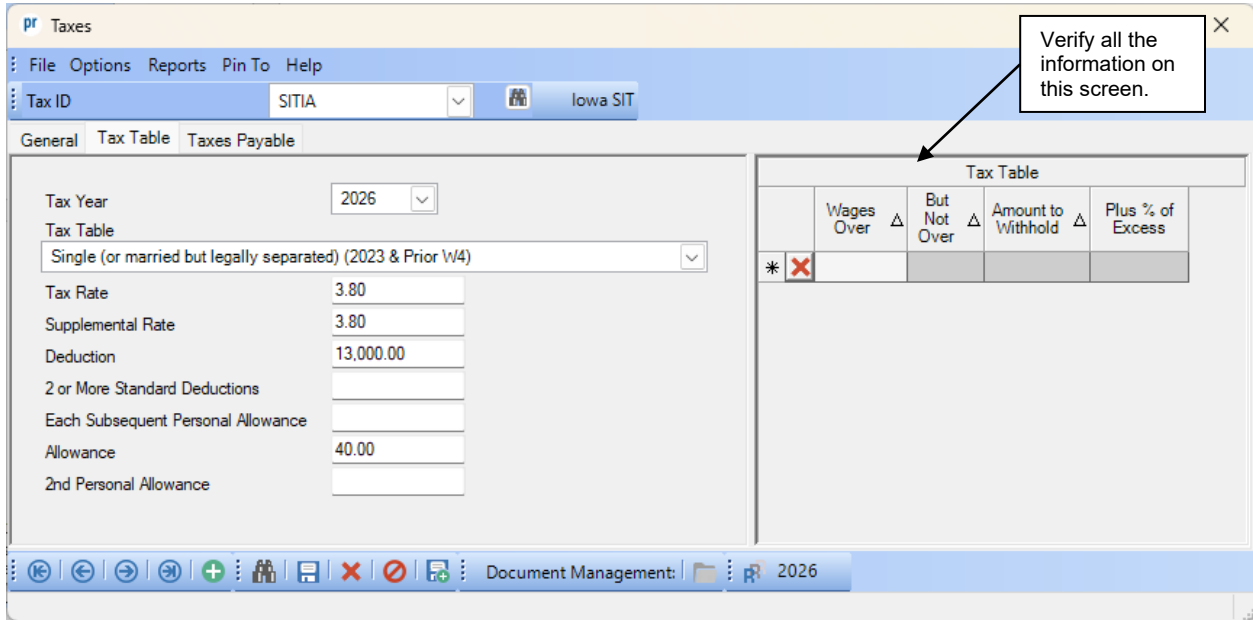
2nd Personal Allowance

Tax Table

	Wages Over Δ	But Not Over Δ	Amount to Withhold Δ	Plus % of Excess
*	X			

Document Management 2026

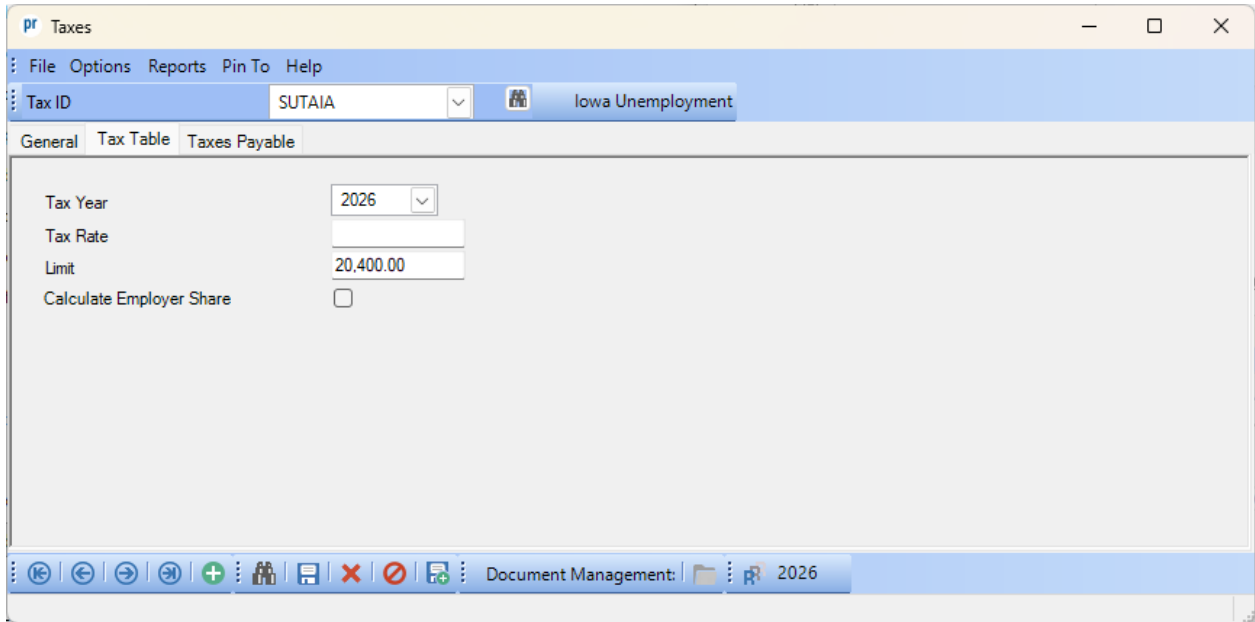
Single (or married by legally separated) (2023 & Prior W4) Tax Table screen:



2026 Iowa State Unemployment Information

Iowa Workforce Development: <https://www.iowaworkforcedevelopment.gov/business>

The Taxable Wage Base for 2026 has decreased to \$20,400. To verify the information, either key in the Tax ID or search for the ID in the Taxes option. On the Tax Table tab, enter 2026 in the Tax Year. The Tax Rate will reflect the value from the previous year and should be edited to be the appropriate figure if necessary. The Limit has already been updated to reflect the new taxable wage base of 20,400. Below is a screen image of the 2026 limit information. Refer to Help Topic – Changing a Tax for detailed instructions to manually change a tax if needed.



2026 Iowa Retirement (IPERS) Limit

Will be updated when Iowa Public Employees Retirement System releases the wage ceiling.