

2025 Iowa State Tax Information

Iowa Department of Revenue: <https://tax.iowa.gov/withholding-tax-information>

To verify the 2025 tax information, either key in the Tax ID or search for the ID in the Taxes option. On the Tax Table tab, enter 2025 in the Tax Year. Below is a screen image of the 2025 tax information. Refer to Help Topic – Changing a Tax for detailed instructions to manually change a tax if needed.

Head of Household Tax Table screen:

PF Taxes

File Options Reports Pin To Help

Tax ID SITIA Iowa SIT

General Tax Table Taxes Payable

Tax Year 2025

Tax Table Head of Household

Tax Rate 3.80

Supplemental Rate 6.00

Deduction 18,050.00

2 or More Standard Deductions

Each Subsequent Personal Allowance

Allowance 40.00

2nd Personal Allowance

	Wages Over	But Not Over	Amount to Withhold	Plus % of Excess
* X				

Document Management: 2025

Married Filing Jointly with Spouse Having No Earned Income, or Qualified Surviving Spouse Tax Table screen:

PF Taxes

File Options Reports Pin To Help

Tax ID SITIA Iowa SIT

General Tax Table Taxes Payable

Tax Year 2025

Tax Table Married Filing Jointly with Spouse Having No Earned Income, or Qualified Surviving Spouse

Tax Rate 3.80

Supplemental Rate 6.00

Deduction 24,050.00

2 or More Standard Deductions

Each Subsequent Personal Allowance

Allowance 40.00

2nd Personal Allowance

	Wages Over	But Not Over	Amount to Withhold	Plus % of Excess
* X				

Document Management: 2025

Other, or Married Filing Jointly with Spouse Having Earned Income Tax Table screen:

PF Taxes

File Options Reports Pin To Help

Tax ID SITIA Iowa SIT

General Tax Table Taxes Payable

Tax Year 2025

Tax Table
Other, or Married Filing Jointly with Spouse Having Earned Income

Tax Rate 3.80

Supplemental Rate 6.00

Deduction 12,000.00

2 or More Standard Deductions

Each Subsequent Personal Allowance

Allowance 40.00

2nd Personal Allowance

Tax Table				
	Wages Over Δ	But Not Over Δ	Amount to Withhold Δ	Plus % of Excess
* X				

Document Management: 2025

Verify all the information on this screen.

Married (2023 & Prior W4) Tax Table screen:

PF Taxes

File Options Reports Pin To Help

Tax ID SITIA Iowa SIT

General Tax Table Taxes Payable

Tax Year 2025

Tax Table
Married (2023 & Prior W4)

Tax Rate 3.80

Supplemental Rate 6.00

Deduction 24,050.00

2 or More Standard Deductions

Each Subsequent Personal Allowance

Allowance 40.00

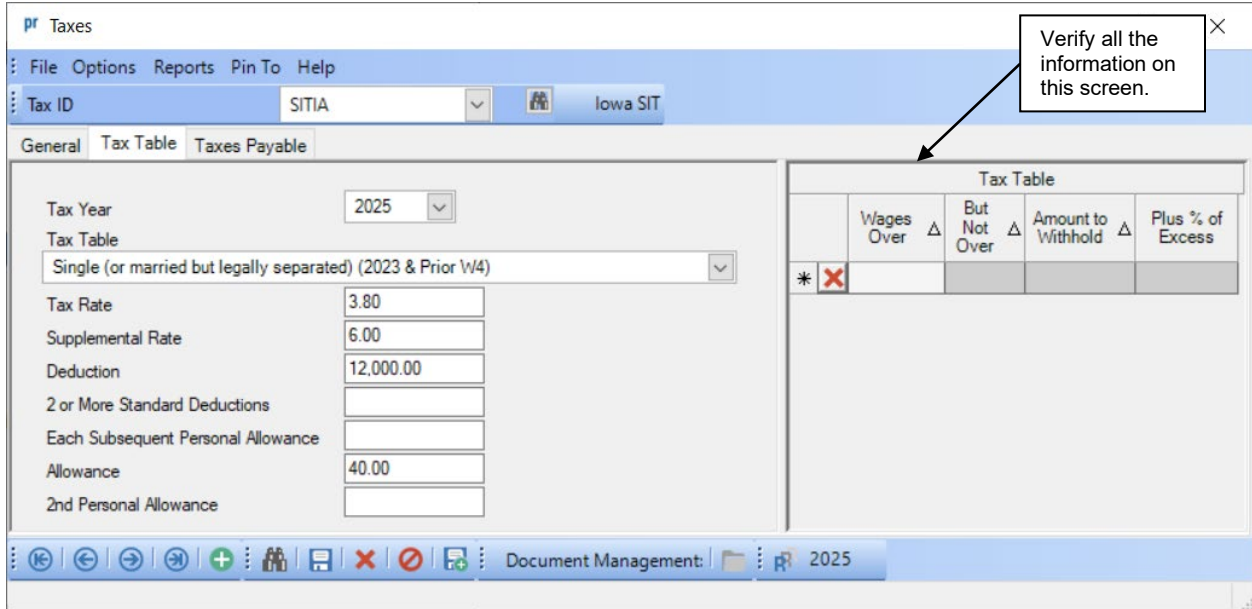
2nd Personal Allowance

Tax Table				
	Wages Over Δ	But Not Over Δ	Amount to Withhold Δ	Plus % of Excess
* X				

Document Management: 2025

Verify all the information on this screen.

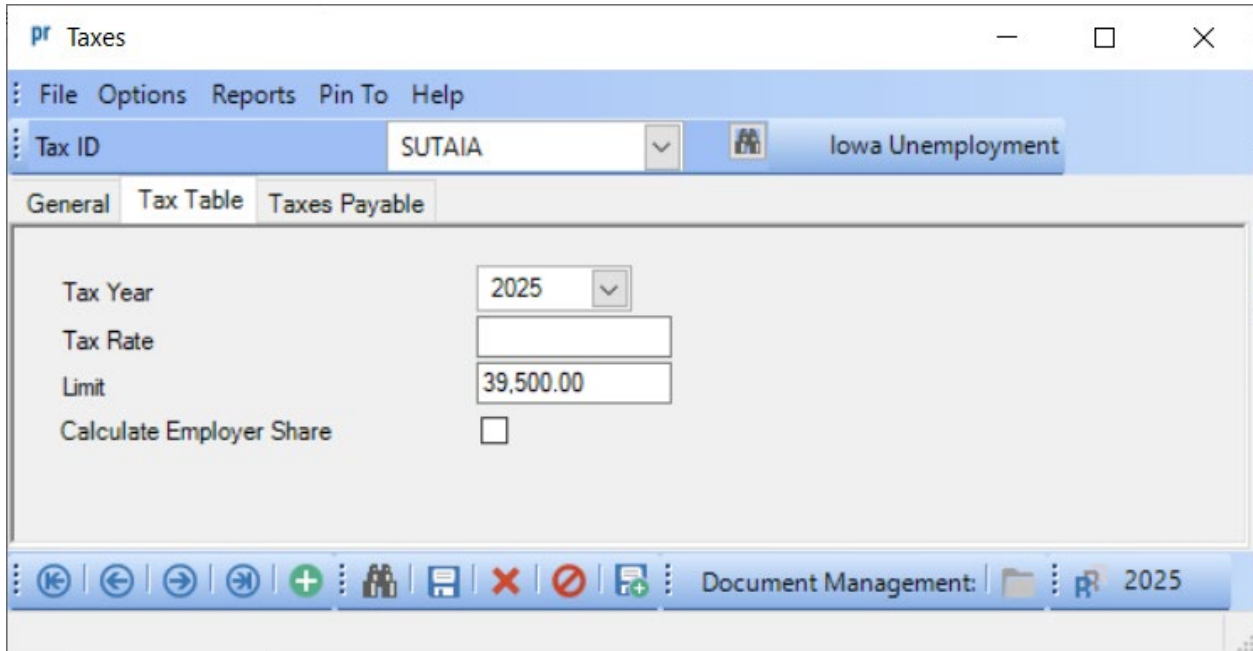
Single (or married by legally separated) (2023 & Prior W4) Tax Table screen:



2025 Iowa State Unemployment Information

Iowa Workforce Development: <https://www.iowaworkforcedevelopment.gov/business>

The Taxable Wage Base for 2025 has increased to \$39,500. To verify the information, either key in the Tax ID or search for the ID in the Taxes option. On the Tax Table tab, enter 2025 in the Tax Year. The Tax Rate will reflect the value from the previous year and should be edited to be the appropriate figure if necessary. The Limit has already been updated to reflect the new taxable wage base of 39,500.00. Below is a screen image of the 2025 limit information. Refer to Help Topic – Changing a Tax for detailed instructions to manually change a tax if needed.



2025 Iowa Retirement (IPERS) Limit

Iowa Public Employees Retirement System: <https://ipers.org/about/contribution-rates>

The IPERS Upper Limit for 2025 has increased to \$350,000. To make this change, either key in the Deduction ID or search for the ID in the Deductions option. On the Rate Table tab, enter **350000** in the Calendar Year Deduction Upper Limit field. Refer to Help Topic – Changing a Deduction for detailed instructions to complete the change if needed.

Limits			
Deduction Limit Range	Deduction Lower Limit	Deduction Upper Limit	Deduction Limit Type
Payroll			
Month			
Quarter			
Calendar Year	.00	350,000.00	Gross
Fiscal Year			